



Description

TQ-T-O-B

Designer: CDC

Typology: Low table

Description:

An object which represents the meaning to add a further personal perspective of the philosophy of life, the research into materials and shapes, to guide towards an ever – increasing focus on its own objective of formally linking together minimalist and creative sensitivity, in order to find the consensus between those who wish to explore further the highly modern trend for a dialogue between indoor and outdoor spaces. Chairs, armchairs, poufs and tables will furnish terraces and gardens thanks to their linear elegance characterized by multiple finishes that can be used to better complement your garden

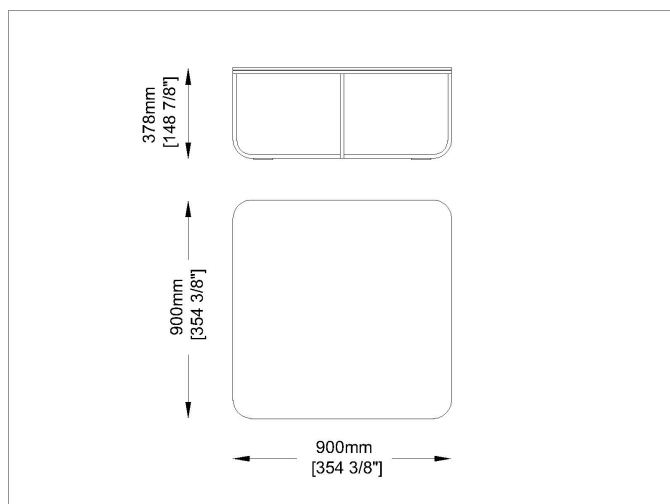
Technical Information:

Small square / round low table

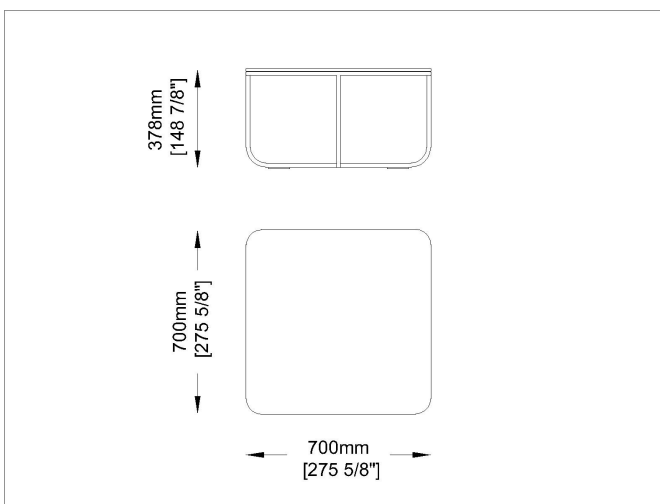
Structure: Satin stainless steel frame.

TQB D: Table top in stiff polyurethane slats, different colour

Drawings



TQbgo



TQb70

Materials

Metal structure

Satinized Steel



Satinized/Satinato
steel satinized

Table top

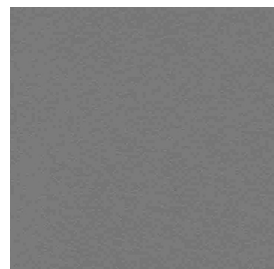
Polyurethane slats



D4
Nero-Black



D1
Bianco-White



D3
Tortora-Taupe

Table top

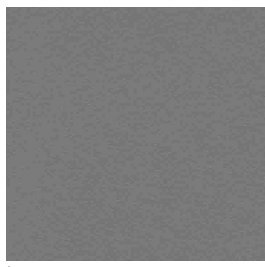
Laminate



L1
Bianco-White



L2810
Rock Taiga



L3
Tortora-Taupe



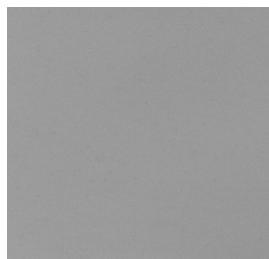
L4
Nero-Black



L437
Azzuro light blue



Product Sheet



L477
Grigio-Grey



L478
Orange-arancione



L558
Rock Beige Boiaccia

Images



Suggested Products



SG1



Jubeae



SB



S



Jubeae
ST



Jubeae
S



Jubeae
SB



Loop