



Description

Tasia

Designer: **Matteo Nunziati**

Typology: Table

Year: 2018

Description:

During the linear creative process, expressed by the sketches that give life to the object, the concrete component of its realization takes place. The details, even the most hidden ones, are privileged in order to create a new product, whose shape and particular tactile surface make it stand out.

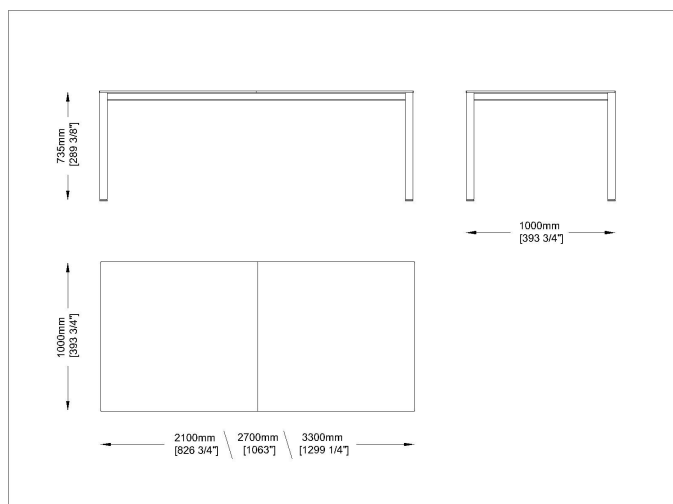
Tasia is the best version for who want to take advantage of an extendable table: from the standard size, two top elements can be added to offer a total of three sizes for the table, always keeping the four legs externally so that you can take advantage of everything the space when adding the seats. The painted structure and the different laminate tops will elegantly complete your space dedicated to lunch and dinner.

Technical information

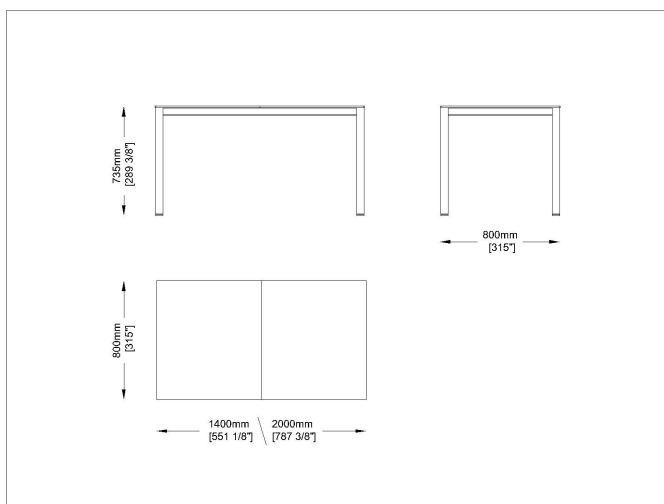
Frame: Steel inox powdercoated frame

Top: High thickness laminate in different colors – White or black solide core

Drawings



TAS21



TAS14

Materials

Metal structure

Solid core top



SC4
Nero-Black



SC1
Bianco-White

Table tops

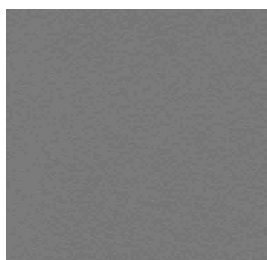
Laminate



L558
Rock Beige Boiaccia



L1
Bianco-White



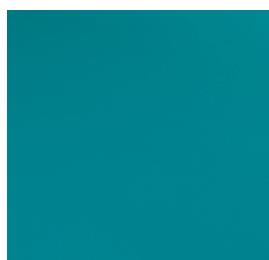
L3
Tortora-Taupe



L4
Nero-Black



L2810
Rock Taiga



L437
Azzuro light blue



L477
Grigio-Grey

Images



Suggested Products



Livis



Jubeae
ST



Nest



Jubeae
S



Jubeae
SB



Private:
Fellini



S



SB