



## Description

Shot

Designer: Stefano Gallizioli

Typology: Low table

Year: 2004

Description:

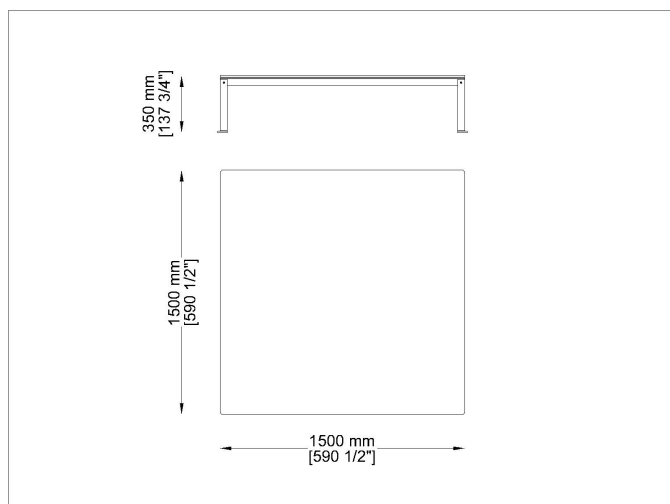
A table becomes reality through design, image definition and industrial processing. An object for various moments of the day, adding a personal and highly pleasing note, totally free of restrictions, combining practicality with unerringly sophisticated elegance. The satinized stainless steel structure can be proposed with a marine laminate top.

Technical information:

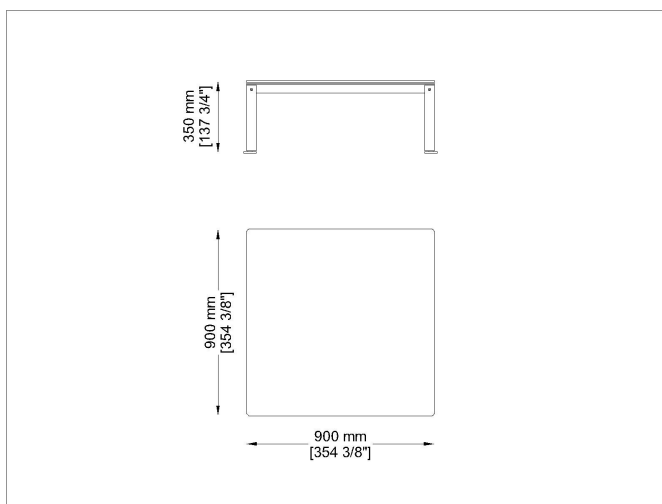
Frame: Steel inox satinized

Top: High thickness laminate in different colors – stiff polyurethane slats -black Zimbabwe stone

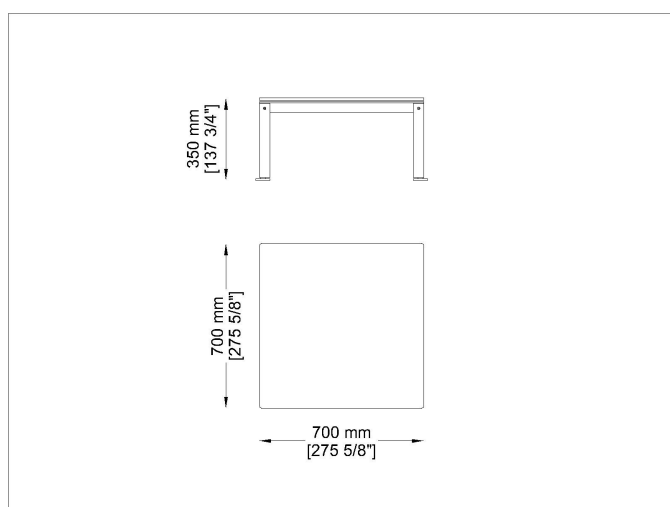
## Drawings



SHQB150



SHQB90



SHQB70

## Materials

### Metal structure

Satinized steel inox steel



Satinized/Satinato  
steel satinized

### Table top

Laminate



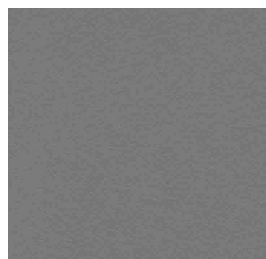
L558  
Rock Beige Boiaccia



L1  
Bianco-White



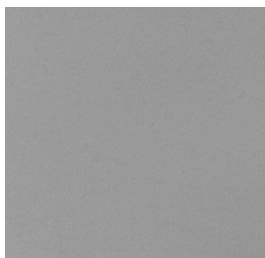
L2810  
Rock Taiga



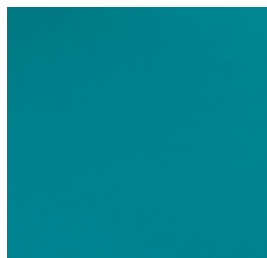
L3  
Tortora-Taupe



L4  
Nero-Black



L477  
Grigio-Grey



L437  
Azzuro light blue

### Table top

Polyurethane slats



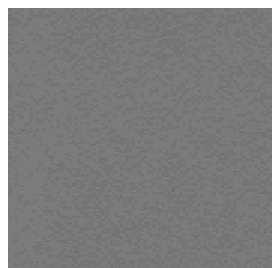
## Product Sheet



D4  
Nero-Black



D1  
Bianco-White



D3  
Tortora-Taupe

Images





Suggested Products



SG-1



Nest



Loop



Private:  
Boomy