



Descrizione

Shot

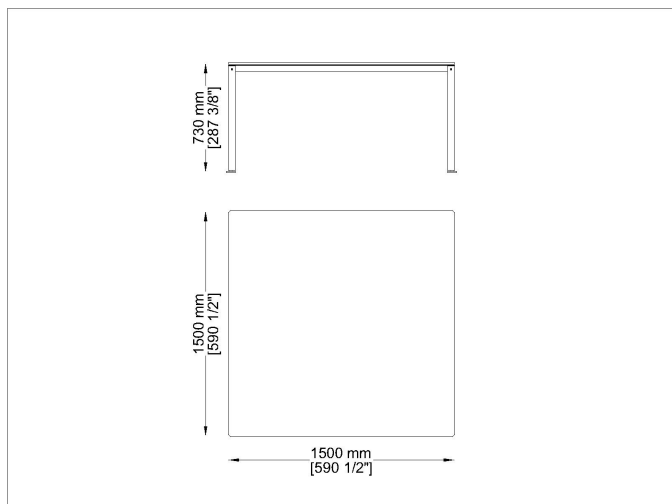
Designer: Stefano Gallizioli Typology: Table Year: 2004

Description: A table becomes reality through design, image definition and industrial processing. An object for various moments of the day, adding a personal and highly pleasing note, totally free of restrictions, combining practicality with unerringly sophisticated elegance. The satinized stainless steel structure can be proposed with a marine laminate top, stiff polyurethane slats or with a Zimbabwe black stone slab, three different materials that can fulfill your ideal solution for a dinner or lunch with friends.

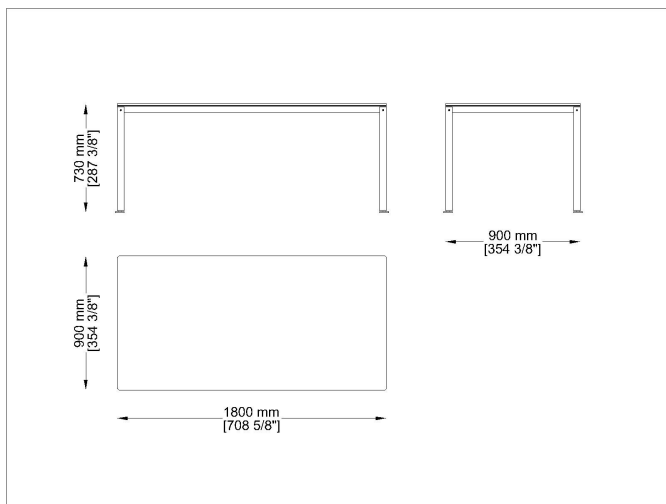
Technical information: Frame: Steel inox satinized Top: High thickness laminate in different colors - stiff polyurethane slats -black Zimbabwe stone

Typology: Table

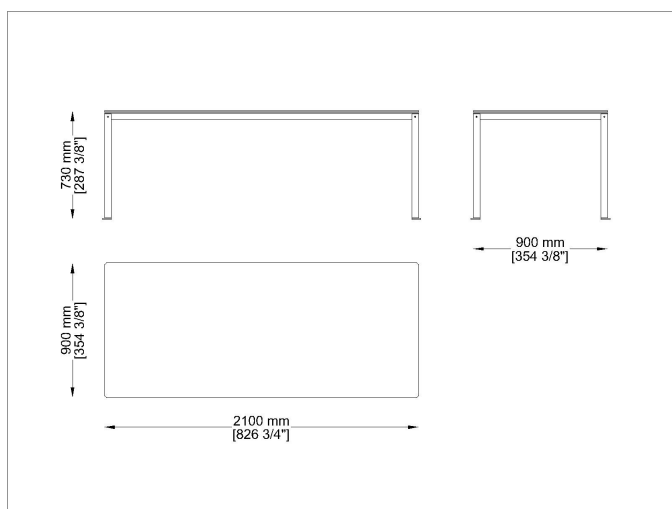
Disegni



SHQ150



SHR180



SHR210

Materiali

Metal structure

Satinized steel



Satinized/Satinato
steel satinized

Table tops

Laminate



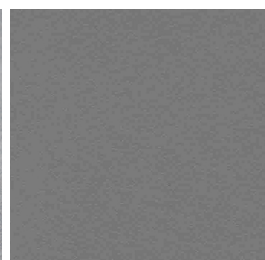
L558
Rock Beige Boiacca



L1
Bianco-White



L2810
Rock Taiga



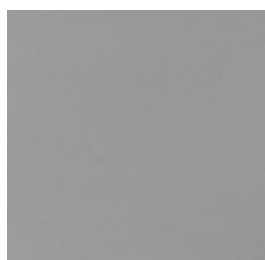
L3
Tortora-Taupe



L4
Nero-Black



L437
Azzuro light blue

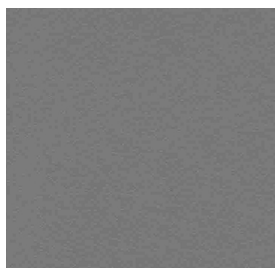


L477
Grigio-Grey

Polyurethane slats



D4
Nero-Black

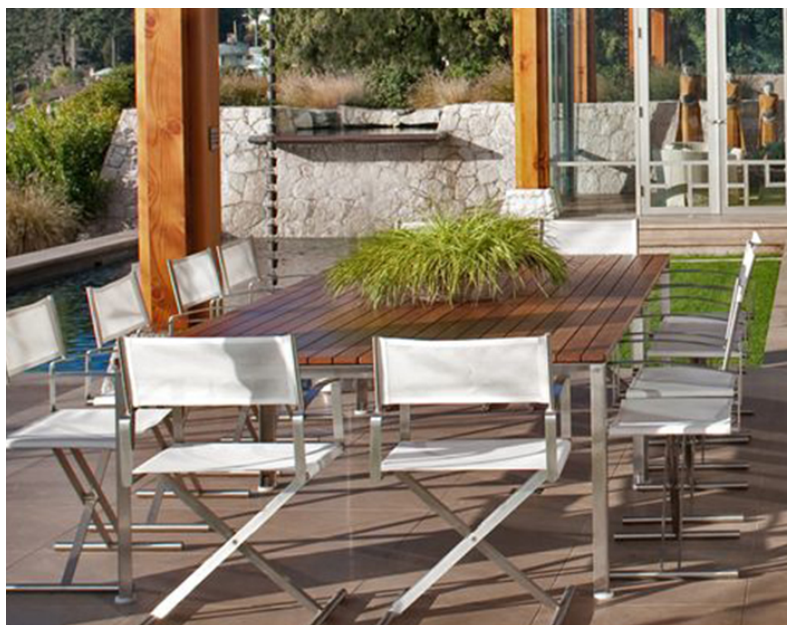


D3
Tortora-Taupe



D1
Bianco-White

Immagini



Prodotti consigliati



SB



S



Nest



Zeta



Livis



Jubeae
ST



Jubeae
S



Jubeae
SB



Privato:
Fellini