



## Description

Shot

Designer: Stefano Gallizioli

Typology: Table

Year: 2004

Description:

A table becomes reality through design, image definition and industrial processing. An object for various moments of the day, adding a personal and highly pleasing note, totally free of restrictions, combining practicality with unerringly sophisticated elegance. The satinized stainless steel structure can be proposed with a marine laminate top, stiff polyurethane slats three different materials that can fulfill your ideal solution for a dinner or lunch with friends.

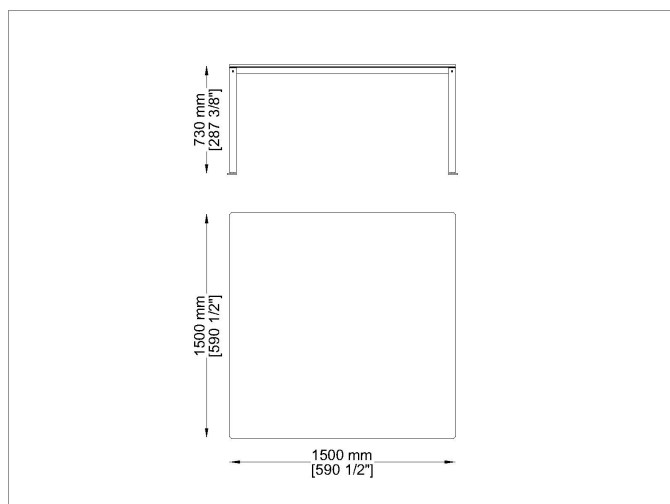
Technical information:

Frame: Steel inox satinized

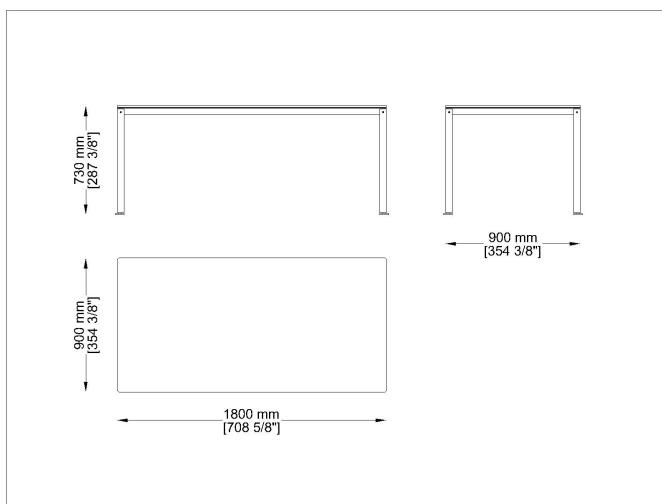
Top: High thickness laminate in different colors – stiff polyurethane slats

Typology: Table

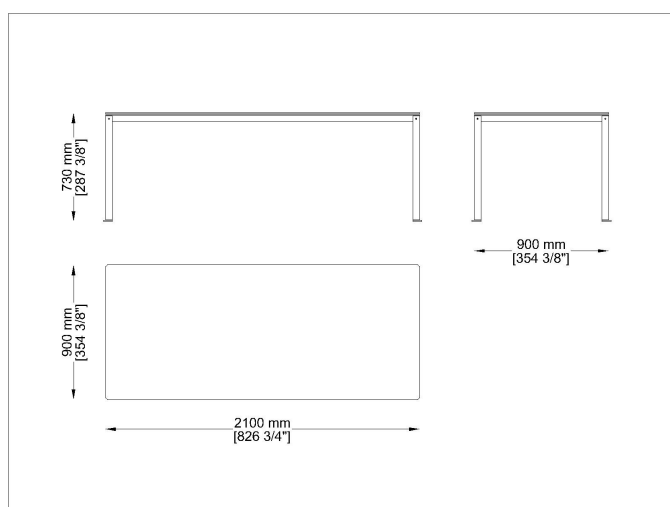
### Drawings



SHQ150



SHR180



SHR210

## Materials

### Metal structure

Satinized inox steel



Satinized/Satinato  
steel satinized

### Laminate

Table top



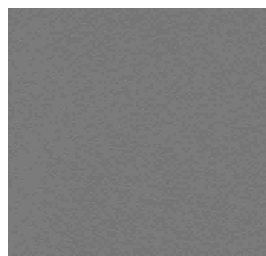
L558  
Rock Beige Boiaccia



L1  
Bianco-White



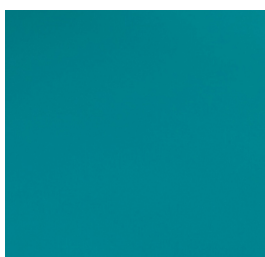
L2810  
Rock Taiga



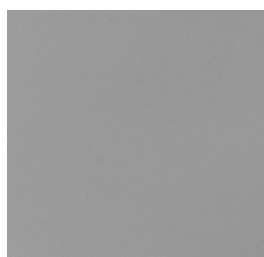
L3  
Tortora-Taupe



L4  
Nero-Black



L437  
Azzuro light blue



L477  
Grigio-Grey

### Slats

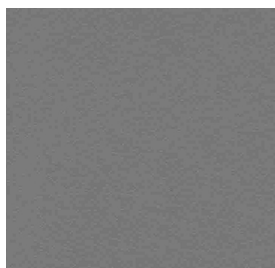
Polyurethane slats



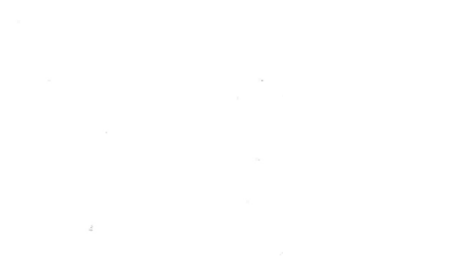
## Product Sheet



D4  
Nero-Black

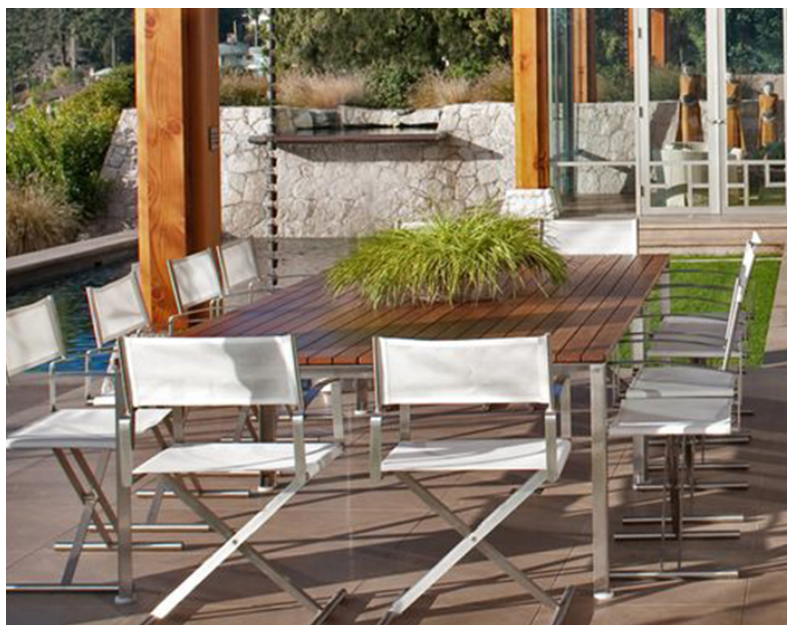


D3  
Tortora-Taupe



D1  
Bianco-White

Images





## Suggested Products



SB



S



Nest



Zeta



Livis



Jubeae  
ST



Jubeae  
S



Jubeae  
SB



Private:  
Fellini