



Description

Sally

Designer: Riccardo Giovanetti

Typology: Table

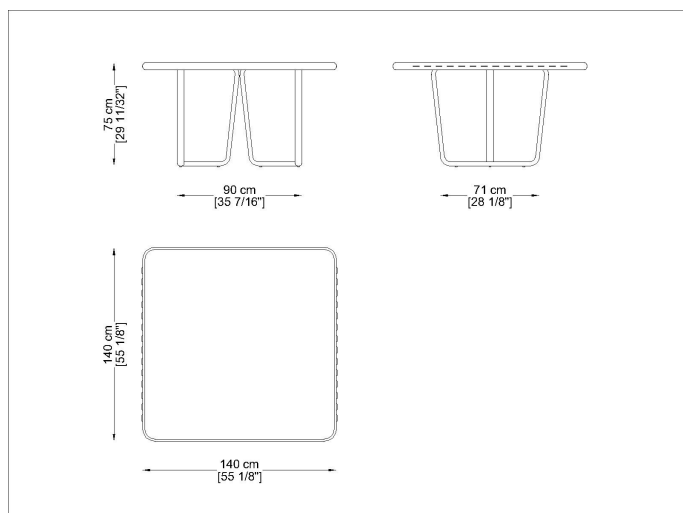
Description:

Sally was born from the idea of creating a collection of outdoor furniture that introduces new constructive and formal solutions: a light and elegant aluminum structure is enriched through the innovative design of the cord that enters and exits the frame, creating a new tensile structure. Sally does not represent a single product, but an articulated family that interprets contemporary living with a strong and recognizable sign.

Technical Information:

Square table with painted aluminum structure. The legs are removable. The HPL laminate top has an extruded aluminum profile edge completed by cordage on the two shorter sides.

Drawings



SYTB1414Co3

Materials

Metal structure

Powder coated Inox steel



RAL1019
Lino-Linen

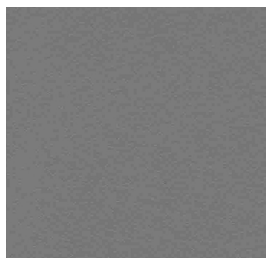
RAL 9010
Bianco-White

Table tops

Laminated



L1
Bianco-White



L3
Tortora-Taupe



L4
Nero-Black



L477
Grigio-Grey



L558
Rock Beige Boiaccia



L2810
Rock Taiga

Images



Suggested Products



Sally
without
arms long
cords



Sally
with
arms
long
cord



Sally
Armchair
with
arms



Sally
sofa
double
seat



Sally sofa
four seats



Sally
round
low
table



Sally
round
side
table



Sally
square
low
table



Sally low
rectangular
table