



Description

Sally

Designer: Riccardo Giovanetti

Typology: Table

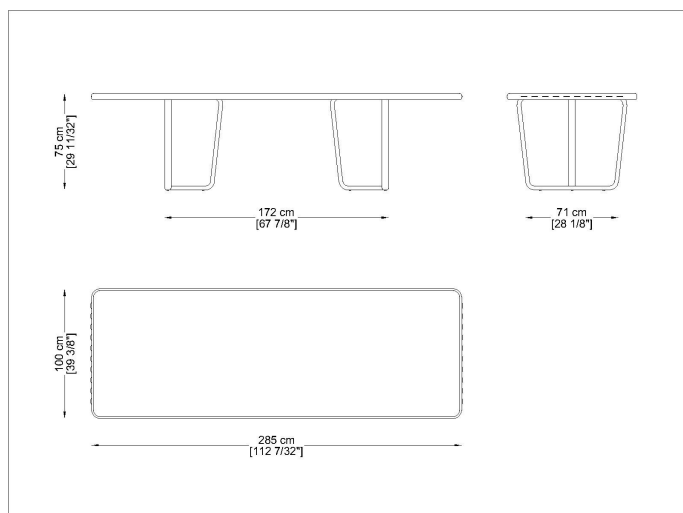
Description:

Sally was born from the idea of creating a collection of outdoor furniture that introduces new constructive and formal solutions: a light and elegant aluminum structure is enriched through the innovative design of the cord that enters and exits the frame, creating a new tensile structure. Sally does not represent a single product, but an articulated family that interprets contemporary living with a strong and recognizable sign.

Technical Information:

Rectangular table with painted aluminum structure. The legs are removable. The HPL laminate top has an extruded aluminum profile edge completed by cordage on the two shorter sides.

Drawings



SYTA2910Co3

Materials

Metal structure

Powder coated Inox steel

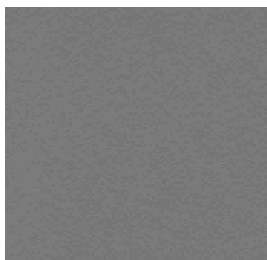


RAL1019
Lino-Linen

RAL 9010
Bianco-White

Table tops

Laminated



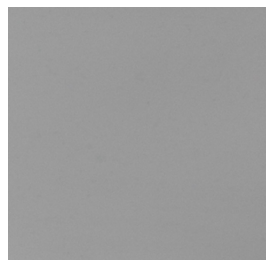
L3
Tortora-Taupe



L4
Nero-Black



L1
Bianco-White



L477
Grigio-Grey



L558
Rock Beige Boiaccia



L2810
Rock Taiga

Images



Suggested Products



Sally
without
arms
long
cords



Sally with
arms long
cord



Sally
table
Square



Sally
Armchair
with
arms



Sally
sofa
double
seat



Sally sofa
four seats



Sally
round
low
table



Sally
round
side
table



Sally
square
low
table



Sally low
rectangular
table