



## Description

Sally

Designer: Riccardo Giovanetti

Typology: Low table

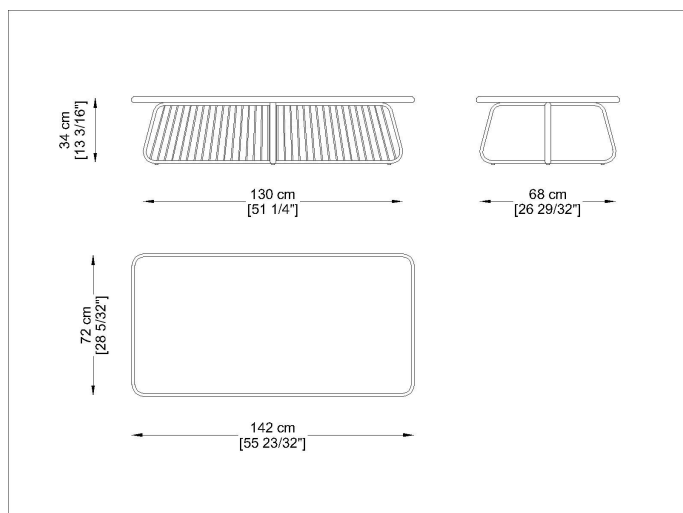
Description:

Sally was born from the idea of creating a collection of outdoor furniture that introduces new constructive and formal solutions: a light and elegant aluminum structure is enriched through the innovative design of the cord that enters and exits the frame, creating a new tensile structure. Sally does not represent a single product, but an articulated family that interprets contemporary living with a strong and recognizable sign.

Technical Information:

Rectangular low table with structure and border in extruded and painted aluminum profile. Legs with and without tensioned acrylic long rope. Top in HPL laminate available in different finishes. Feet in moulded PVC.

## Drawings



SYTD1472C04

## Materials

### Metal structure

Powder coated inox steel



RAL1019  
Lino-Linen

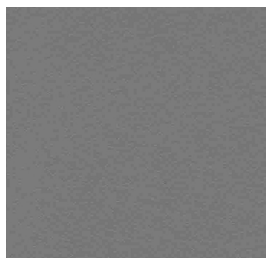
RAL 9010  
Bianco-White

### Table tops

Laminate



L1  
Bianco-White



L3  
Tortora-Taupe



L4  
Nero-Black



L477  
Grigio-Grey



L558  
Rock Beige Boiaccia



L2810  
Rock Taiga

### Acrylic Chord

Acrylic cord 6mm



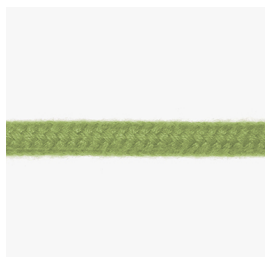
## Product Sheet



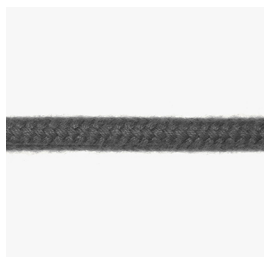
CR9  
Creta Clay



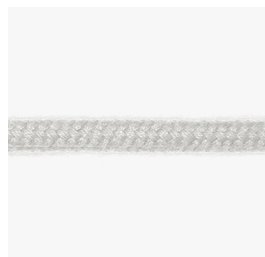
CR8601  
Malva-Mauve



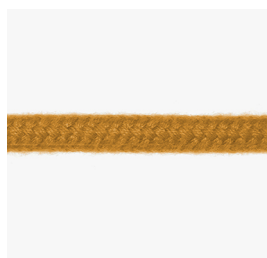
CR7244  
Amande



CR107  
Antracite-Charcoal



CR15  
Bianco-White



CR5040  
Ocra-Ocher



Images



## Suggested Products



Sally  
table  
Square



Sally  
table  
Rectangle



Sally  
sofa  
double  
seat



Sally  
sofa  
four  
seats



Sally  
Armchair  
with  
arms



Sally  
without  
arms long  
cords



Sally  
with  
arms  
long  
cord