



## Description

Sally

Designer: Riccardo Giovanetti

Typology: Low table

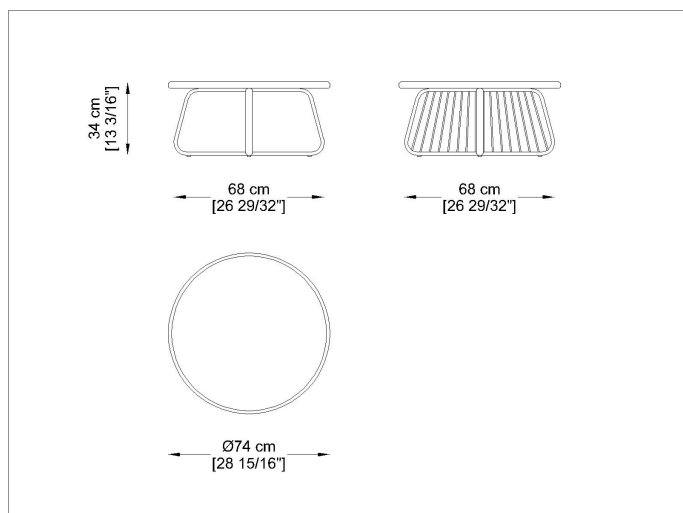
Description:

Sally was born from the idea of creating a collection of outdoor furniture that introduces new constructive and formal solutions: a light and elegant aluminum structure is enriched through the innovative design of the cord that enters and exits the frame, creating a new tensile structure. Sally does not represent a single product, but an articulated family that interprets contemporary living with a strong and recognizable sign.

Technical Information:

Round low table with structure and border in extruded and painted aluminum profile. Legs with and without tensioned acrylic long rope. Top in HPL laminate available in different finishes. Feet in moulded PVC

## Drawings



SYTF0074Co4

## Materials

### Metal structure

Powder coated inox steel



RAL1019  
Lino-Linen

RAL 9010  
Bianco-White

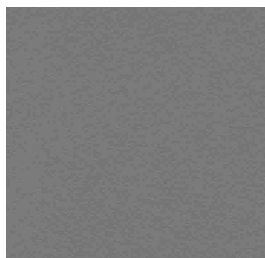
### Table top

Laminate



L2810  
Rock Taiga

L1  
Bianco-White



L3  
Tortora-Taupe



L477  
Grigio-Grey



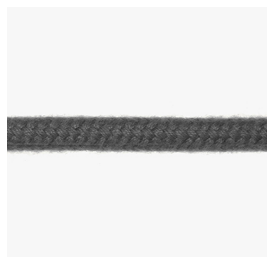
L558  
Rock Beige Boiacca



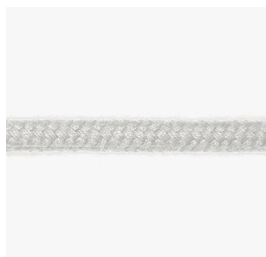
L4  
Nero-Black

### Acrylic Chord

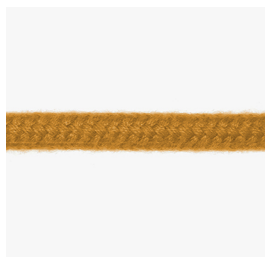
Acrylic cord 6mm



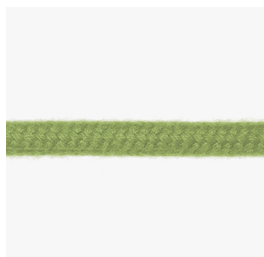
CR107  
Antracite-Charcoal



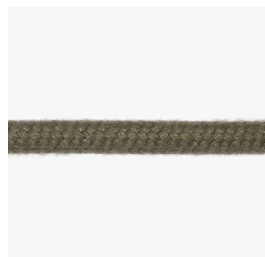
CR15  
Bianco-White



CR5040  
Ocra-Ocher



CR7244  
Amande



CR9  
Creta Clay



CR8601  
Malva-Mauve



Images



## Suggested Products



Sally  
table  
Square



Sally  
table  
Rectangle



Sally  
sofa  
double  
seat



Sally  
sofa  
four  
seats



Sally  
Armchair  
with  
arms



Sally  
without  
arms long  
cords



Sally  
with  
arms  
long  
cord