



Description

Rab

Designer: CDC
Typology: Table
Year: 2014

Description:

In its simplicity of form and structure, the Rab coffee table offers an excellent solution for bars and clubs that take advantage of outdoor spaces. Dining table or aperitif flanked by stools, you can have it in the round or square version and meet the needs of your public and even private space

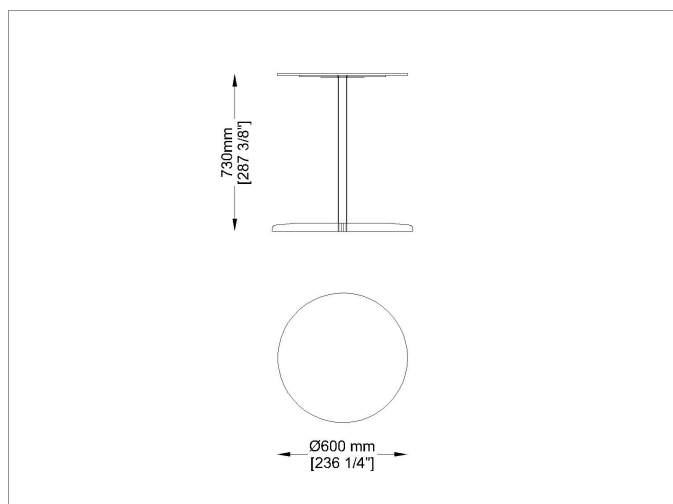
Technical information:

Frame: Steel inox satinized or powder coated

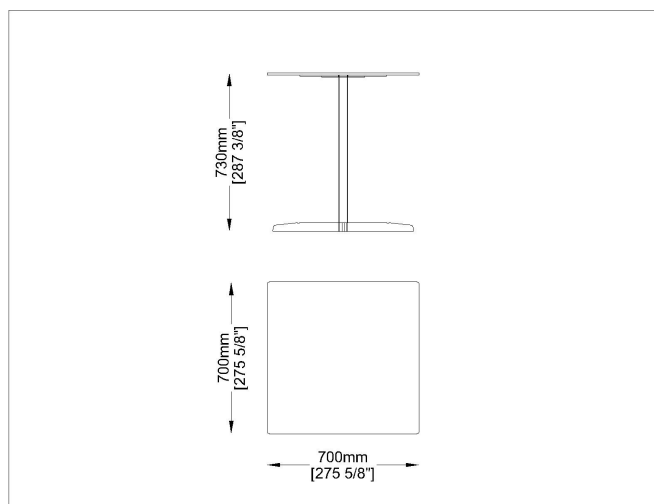
Top: High Gloss thick laminate in different colors

Typology: Table

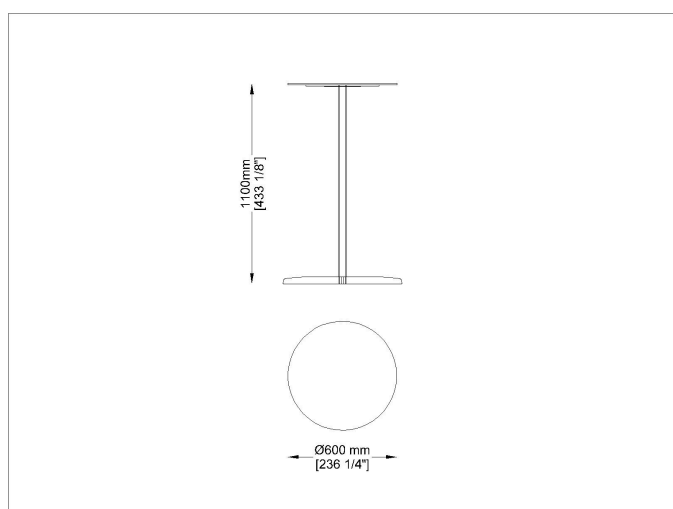
Drawings



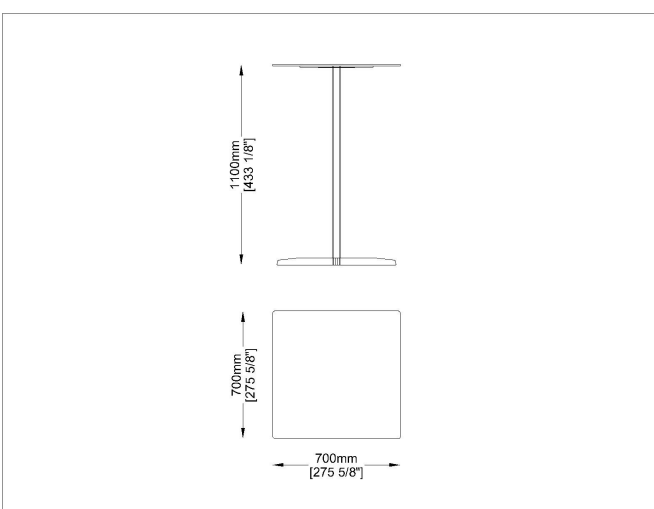
RAB TH73O6



RAB TH73Q7



RAB TH110O6



RAB TH110Q7

Materials

Metal Structure

Satinized Inox steel



Satinized/Satinato
steel satinized

Metal structure

Powder coated Inox steel

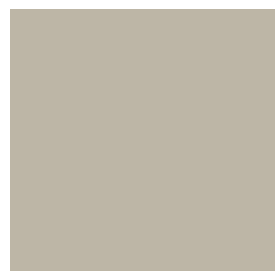


RAL 5024
Azzuro-Light Blue

RAL 9010
Bianco-White



RAL PD5843
Tortora-Taupe



RAL1019
Lino-Linen

Laminate

Table top



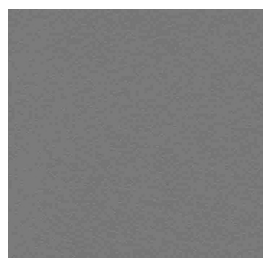
L4
Nero-Black



L1
Bianco-White



L2810
Rock Taiga



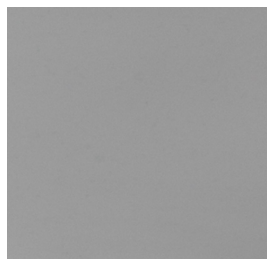
L3
Tortora-Taupe



L437
Azzuro light blue



Product Sheet



L477
Grigio-Grey



L558
Rock Beige Boiaccia

Suggested Products



S G A