



## Description

Livis

Designer: Matteo Nunziati

Typology: Director Chair

Year: 2016

Description:

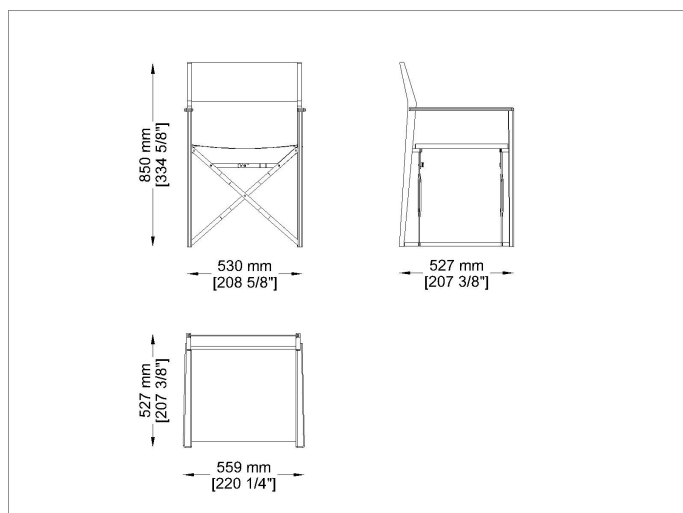
When one wants to experience outdoor spaces to the fullest, the idea of comfort is associated with functionality. The features of the objects assume expressive and intense qualities, useful to create a feeling between the man and the surrounding cosmos. In this way, these two realities will blend together entirely. The Livis chair contains all these sensations thanks to its very particular line and its structure in different colors coordinated with as many technical fabrics. It is provided with a safety lever when sitting and with a zipper in the hidden part of the seat fabric to be able to conveniently clean it.

Technical information:

Frame: Steel inox and aluminium powdercoated frame

Seat and Back: Sun or Batyline® fabric available in different colors

## Drawings



LV

## Materials

### Metal structure

Powder coated inox steel

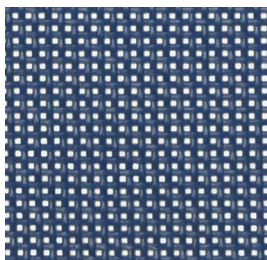


RAL PD5843  
Tortora-Taupe

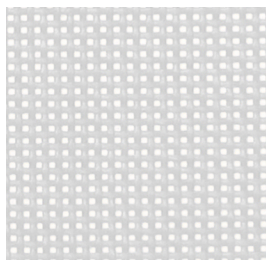
RAL 9010  
Bianco-White

### Technical fabric

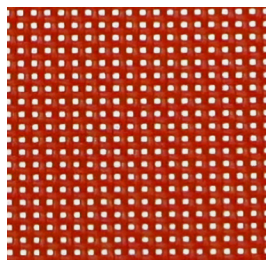
Seat and back in technical fabric Sun or Batyline®



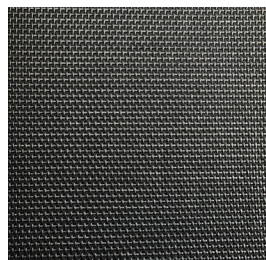
Batyline. Eden  
Bianco-White 50567



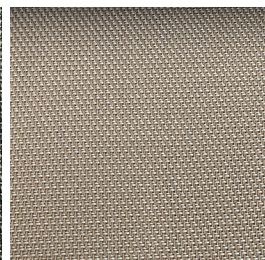
Batyline. Eden  
Bianco-White 50567



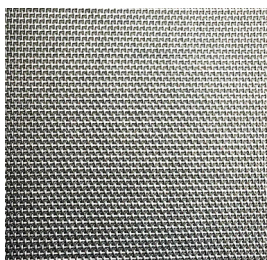
Batyline. ISO  
Rosso-Red 5011



Sun  
Nero-Black



Sun  
Tortora-Taupe



Sun  
Bianco-White

Images



Suggested Products



Tasia



Shot



Nest