



Description

Flower pot

Designer: Stefano Gallizioli Typology: Flower pot Year: 2003

Description:

In order to show the beauty of a plant, the planter has its importance; the clean lines and neutrality of the steel sheet that characterizes our planters allows any element inserted to stand out even more. In order to allow the plant not to suffer and to have a fresh and humid environment, the entire internal surface of the planters is characterized by an insulator called Enkadrain which allows you to maintain a fresh environment despite the steel walls that support it.

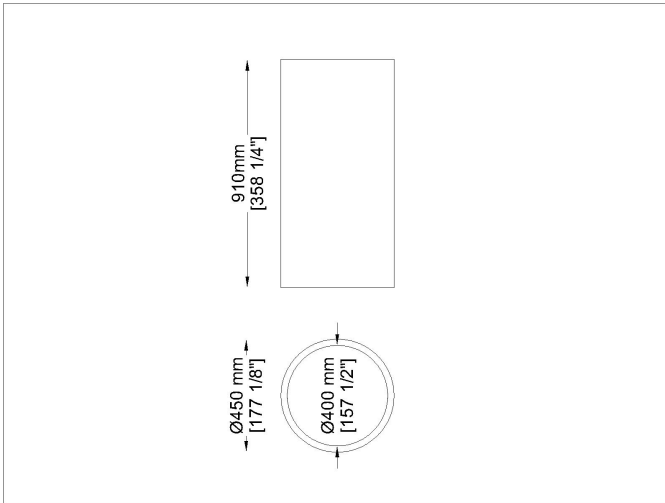
Technical information:

Frame
Steel inox frame

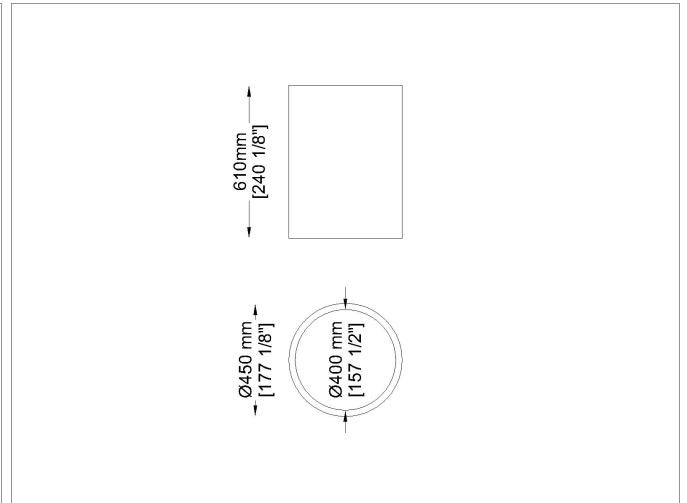
Equipped inside with an insulating material called Enkadrain

Typology: Flower pot

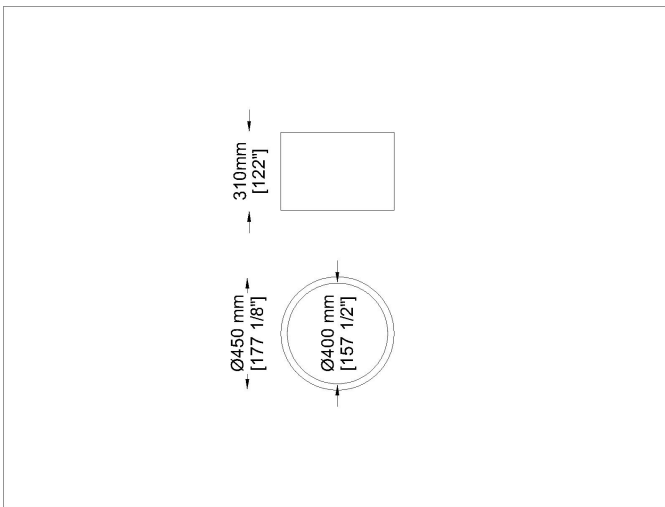
Drawings



FO Hg1



FO H61



FO H31

Materials

Metal structure

Satinized steel



Satinized/Satinato
steel satinized

Images



Suggested Products



Doccia